

Install Room Alert Monitors

The Most Advanced, Easy-To-Use, Reliable & Affordable Monitors Available To...

MONITOR, ALERT... LOG, GRAPH... VIEW, REPORT... MAP, MANAGE & PROTECT...

PROTECT YOUR FACILITY AGAINST DOWNTIME CAUSED BY...

- High Heat
- Extreme Cold
- High Humidity or Heat Index
- Water Leaks
- Unexpected Power Loss
- Extreme Weather
- Smoke
- Unauthorized Entry
- Doors Left Open (or Closed)
- ...And So Much More

AVTECH & Room Alert... Environment Monitoring Made Easy!



The Worldwide Leader In Proactive Environment Monitoring Since 1988

Environment factors can cause major problems for your critical facilities and assets. Temperature, humidity, flood, power, smoke, and other environmental conditions can negatively affect data centers, warehouses, manufacturing, and facilities of all types. Even a slight change in temperature or humidity, or the introduction of water or smoke, can spell disaster for valuable equipment, property, people, or the business.

AVTECH has spent more than 30 years providing solutions that proactively monitor the environment and help warn of changes that might cause problems. Room Alert products are a critical part of your business continuity plan and are helping protect facilities in 187 of 196 countries, 98% of the Fortune 1000, the United Nations, Pentagon, FBI, and thousands of other facilities worldwide. You can trust Room Alert to protect your important facilities and assets.



Richard Grundy, President & COO; Anne Sigourney, CFO;
Michael Sigourney, Founder & CEO

Designed, Built, And Supported In The USA

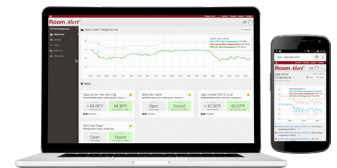
Room Alert monitors, sensors and software are designed and supported from our headquarters in Warren, Rhode Island. All our products are manufactured in the United States in ISO 9001 certified facilities to ensure the highest quality. Users can monitor Room Alert using our Room Alert Account portal, our local Room Alert Manager software, directly from Room Alert firmware, or any professional third-party SNMP monitoring platform.

Our users depend on Room Alert to make sure their equipment and facilities are protected against damage or downtime. We take that peace of mind to heart and ensure that all our products and services will perform for years after purchase with Lifetime Support and Lifetime Firmware Updates.

Patented And Award Winning

Every Room Alert user has access to our patented Monitor360™ technology as part of our Room Alert Account portal. Take your environment monitoring and facility management to the next level by using Monitor360 to build virtual sensors and alerts that provide deeper insight into your facility. Room Alert users will not only know that they are receiving an alert, they will know exactly why conditions in their facility are in an alarm state, allowing them to respond quickly to minimize downtime and damage.

Room Alert is a secure, award-winning platform that is designed to be ready to protect your facility within minutes of installing it in your facility. Our countless online resources, product specialists and support team are here to assist with whatever monitoring needs you may have.



Protecting People, Property & Productivity To Provide Peace Of Mind

Follow Us:



Room Alert 32S (RA32S) **PRO**



- Can accommodate 32+ sensors with Digital Temperature, Humidity, Dew Point, Heat Index & Main Power sensors built-in.
- Secure data transfer options include HTTPS / SSL Web Interface, SSL / TLS Email Support, SNMP v1/v2c/v3, 2048-bit encryption and SSL Push to Room Alert Account.
- Includes Power over Ethernet (PoE), built-in UPS, external Digital Temperature & Humidity Sensor, Factory Reset Button, On/Off Button, 2 External Relay Output Ports, 2 Light Tower & Relay Adapter Ports, and 2 Analog Sensor Ports (0-5V) in a rack mount bracket.
- Use Room Alert 32S's built-in web server, bundled Room Alert management software, RoomAlert.com service, or SNMP applications to monitor units across your network.
- Room Alert 32S allows real-time monitoring, advanced alerting by email/email-to-SMS/SNMP and more, Fahrenheit/Celsius, high/low watermarks, PUSH technology, logging/graphing software, shutdown, reboot and log off capabilities & much more.



\$CALL
RA32S-DAP-RAS

INCLUDES: Room Alert 32S monitor, built-in Digital Temperature, Humidity, Dew Point, and Heat Index Sensors, external 25' Digital Temperature & Humidity Sensor, 8 Digital Sensor Ports (RJ-11), 16 Switch Sensor Channels, Factory Reset Button, Power Over Ethernet (PoE), PUSH technology, Ethernet Connection (RJ-45), 2 Light Tower & Relay Adapter Ports, 2 Relay Output Ports (0.3A@125VAC / 1A@24VDC), 2 Analog Sensor Input Ports (0-5V), 10' Ethernet cable, 5V Power Adapter (110/240V, RoHS), built-in web server, SNMP Trap & Query enabled, SNMP MIB, PDF Room Alert User's Guide & Reference Manual, Non-Expiring RoomAlert.com Account, 1 year Professional Account Upgrade, Room Alert Manager software available on Professional tier or higher, Lifetime Support, Lifetime Firmware Updates, 3 year limited warranty from date of purchase. Optional sensors, Mini UPS, service upgrades, Light Tower & Relay Adapter (LTA), Light Tower or Relay Switch Sensor, GSM modem & more available.

Room Alert 12S / 12SR (RA12S / RA12SR) **PRO**



- Can accommodate 12+ sensors with a Digital Temperature Sensor built-in.
- Secure data transfer options include HTTPS / SSL Web Interface, SSL / TLS Email Support, SNMP v1/v2c/v3, 2048-bit encryption and SSL Push to Room Alert Account.
- Includes Power over Ethernet (PoE), external Digital Temperature & Humidity Sensor, Factory Reset Button, External Relay Output Port, Light Tower & Relay Adapter Port, and Analog Sensor Port (0-5V). Rack mount bracket optional.
- Use Room Alert 12S's built-in web server, bundled Room Alert management software, RoomAlert.com service, or SNMP applications to monitor units across your network.
- Room Alert 12S allows real-time monitoring, advanced alerting by email/email-to-SMS/SNMP and more, Fahrenheit/Celsius, high/low watermarks, PUSH technology, logging/graphing software, shutdown, reboot and log off capabilities & much more.



\$CALL
RA12S-DAP-WAS (Standard)
RA12S-DAP-RAS (Rack Mount)

INCLUDES: Room Alert 12S monitor, built-in Digital Temperature Sensor, external 25' Digital Temperature & Humidity Sensor, 3 Digital Sensor Ports (RJ-11), 4 Switch Sensor Channels, Factory Reset Button, Power Over Ethernet (PoE), PUSH technology, Ethernet Connection (RJ-45), Light Tower & Relay Adapter Port, Relay Output Port (0.3A@125VAC / 1A@24VDC), Analog Sensor Input Port (0-5V), 10' Ethernet cable, 5V Power Adapter (110/240V, RoHS), built-in web server, SNMP Trap & Query enabled, SNMP MIB, PDF Room Alert User's Guide & Reference Manual, Non-Expiring RoomAlert.com Account, 1 year Professional Account Upgrade, Room Alert Manager software available on Professional tier or higher, Lifetime Support, Lifetime Firmware Updates, 3 year limited warranty from date of purchase. Optional sensors, Mini UPS, service upgrades, Light Tower & Relay Adapter (LTA), Light Tower or Relay Switch Sensor, GSM modem & more available.

Room Alert 3S (RA3S) **PRO**



- Can accommodate **3+ sensors** and a Light Tower or Relay Switch Sensor. Built-in Digital Temperature Sensor.
- Secure data transfer options include HTTPS / SSL Web Interface, SSL / TLS Email Support, SNMP v1/v2c/v3, 2048-bit encryption and SSL Push to Room Alert Account.
- Includes 1 Digital Sensor Port, 1 Switch Sensor Channel, and the Digital Sensor Port allows a Light Tower & Relay Adapter to be optionally connected.
- Use Room Alert 3S's built-in web server, bundled Room Alert management software, RoomAlert.com service, or SNMP applications to monitor units across your network.
- Room Alert 3S allows real-time monitoring, advanced alerting by email/email-to-SMS/SNMP and more, Fahrenheit/Celsius, high/low watermarks, PUSH technology, logging/graphing software, shutdown, reboot and log off capabilities & much more.



\$CALL
RA3S-ESO-BAS

INCLUDES: Room Alert 3S ID Box (0U, 3-5/8" L x 1-3/4" W x 1" H), built-in Digital Temperature Sensor, 1 external Digital Sensor Port (RJ-11), 1 Switch Sensor Channel, Factory Reset Button, Power over Ethernet (PoE), PUSH technology, Ethernet Connection (RJ-45), 10' Ethernet cable, 5V Power Adapter, (110/240 V, RoHS), built-in web server, SNMP Trap & Query enabled, SNMP MIB, PDF Room Alert User's Guide & Reference Manual, Non-Expiring RoomAlert.com Account, 1 Year Professional account upgrade, Room Alert Manager software available on Professional tier or higher, Lifetime Support, Lifetime Firmware Updates, 3 year limited warranty from date of purchase. Optional sensors, Mini UPS, service upgrades, Light Tower & Relay Adapter, GSM modem & more available.

Order through your favorite reseller or online.

Room Alert 32E (RA32E)



- Can accommodate **32+ sensors** with Digital Temperature, Humidity, Dew Point, Heat Index & Main Power sensors built-in.
- Includes Power over Ethernet (PoE), a built-in UPS, external Digital Temperature & Humidity Sensor, Factory Reset Button, On/Off Button, 2 External Relay Output Ports, 2 Light Tower & Relay Adapter Ports, 2 Analog Sensor Ports (0-5V) in a rack mount bracket.
- Use Room Alert 32E's built-in web server, local Room Alert management software, RoomAlert.com service, or SNMP applications to monitor units across your network.
- Room Alert 32E allows real-time monitoring, advanced alerting by email/email-to-SMS/SNMP and more, Fahrenheit/Celsius, high/low watermarks, PUSH technology, logging/graphing software, shutdown, reboot and log off capabilities & much more.
- Organizations that require advanced security features should choose the Room Alert 32S.



\$CALL
RA32E-TH1-RAS

INCLUDES: Room Alert 32E Rack Unit (1U 19"), built-in Digital Temperature Sensor, built-in Digital Humidity Sensor, built-in Main Power Sensor, built-in Heat Index and Dew Point capability, external 25' Digital Temperature & Humidity Sensor, 8 external Digital Sensor Ports (RJ-11), 16 Switch Sensor Channels, Power On/Off Button, Factory Reset Button, Power Over Ethernet (PoE), LED Sensor Status indicators, built-in Uninterruptible Power Supply (UPS), rotating mounting wings, PUSH technology, Ethernet Connection (RJ-45), 2 External Light Tower or Relay Adaptor Ports, 2 External Relay Output Ports (0.3A@125VAC / 1A@24VDC), 2 Analog Sensor Input Ports (0-5V), 10' Ethernet cable, 5V Power Adapter (110/240V, RoHS), built-in web server, SNMP Trap & Query enabled, SNMP MIB, PDF *Room Alert User's Guide & Reference Manual*, Non-Expiring RoomAlert.com Account, 1 Year of RoomAlert.com Personal account access with free 90 day Professional upgrade (with any Room Alert monitor purchase), Room Alert Manager software available

Room Alert 12E / 12ER (RA12E / RA12ER)



- Can accommodate **12+ sensors** with a Digital Temperature Sensor built-in.
- Includes Power over Ethernet (PoE), external Digital Temperature & Humidity Sensor, Factory Reset Button, External Relay Output Port, Light Tower & Relay Adapter Port, and Analog Sensor Port (0-5V). Rack mount bracket optional.
- Use Room Alert 12E's built-in web server, local Room Alert management software, RoomAlert.com service, or SNMP application to monitor units across your network.
- Room Alert 12E allows real-time monitoring, advanced alerting by email/email-to-SMS/SNMP and more, Fahrenheit/Celsius, high/low watermarks, PUSH technology, logging/graphing software, shutdown, reboot and log off capabilities & much more.
- Organizations that require advanced security features should choose the Room Alert 12S/12SR.



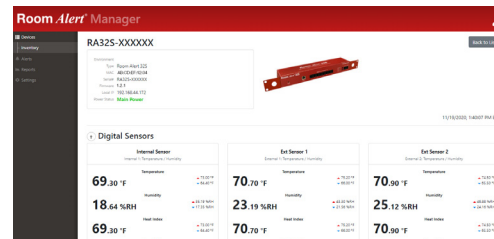
\$CALL
RA12E-TH1-WAS (Standard)
RA12E-TH1-RAS (Rack Mount)

INCLUDES: Room Alert 12E monitor, built-in Digital Temperature Sensor, external 25' Digital Temperature & Humidity Sensor, 3 Digital Sensor Ports (RJ-11), 4 Switch Sensor Channels, Factory Reset Button, Power Over Ethernet (PoE), PUSH technology, Ethernet Connection (RJ-45), Light Tower & Relay Adapter Port, Relay Output Port (0.3A@125VAC / 1A@24VDC), Analog Sensor Input Port (0-5V), 10' Ethernet cable, 5V Power Adapter (110/240V, RoHS), built-in web server, SNMP Trap & Query enabled, SNMP MIB, PDF *Room Alert User's Guide & Reference Manual*, Non-Expiring RoomAlert.com Account, 1 Year of RoomAlert.com Personal account access with free 90 day Professional upgrade (with any Room Alert monitor purchase), Room Alert Manager software available on Professional tier or higher, Lifetime Support, Lifetime Firmware Updates,

Room Alert Manager Software

Room Alert Manager is AVTECH's local software solution for Room Alert management, alerting, reporting, graphing and more. Room Alert Manager software is a free download for all Room Alert users on the Professional Tier and higher and offers a wide range of features including:

- User-friendly interface
- Multiple threshold alerts
- Customized alert durations
- Firmware updates across the network
- Hardware groupings for easier management



For Room Alert users in industries that require local software management solutions for security or data privacy purposes, Room Alert Manager is the optimal choice for facility protection against environmental downtime.

Room Alert 3E (RA3E)



- Can accommodate **3+ sensors** and a Light Tower or Relay Switch Sensor. Built-in Digital Temperature Sensor.
- Includes 1 Digital Sensor Port, 1 Switch Sensor Channel, and the Digital Sensor Port allows a Light Tower & Relay Adapter to be optionally connected.
- Use Room Alert 3E's built-in web server, local Room Alert management software, RoomAlert.com service, or SNMP applications to monitor units across your network.
- Room Alert 3E allows real-time monitoring, advanced alerting by email/email-to-SMS/SNMP and more, Fahrenheit/Celsius, high/low watermarks, PUSH technology, logging/graphing software, shutdown, reboot and log off capabilities & much more.
- Organizations that require advanced security features should choose the Room Alert 3S.



\$CALL
RA3E-ESO-BAS

INCLUDES: Room Alert 3E ID Box (0U, 3-5/8" L x 1-3/4" W x 1" H), built-in Digital Temperature Sensor, 1 external Digital Sensor Port (RJ-11), 1 Switch Sensor Channel, Factory Reset Button, Power over Ethernet (PoE), PUSH technology, Ethernet Connection (RJ-45), 10' Ethernet cable, 5V Power Adapter, (110/240 V, RoHS), built-in web server, SNMP Trap & Query enabled, SNMP MIB, PDF *Room Alert User's Guide & Reference Manual*, Non-Expiring RoomAlert.com Account, 1 Year of RoomAlert.com Personal account access with free 90 day Professional upgrade (with any Room Alert monitor purchase), Room Alert Manager software available on Professional tier or higher, Lifetime Support, Lifetime Firmware Updates, '30-Day Satisfaction Guarantee'. Optional sensors, Mini UPS, service upgrades, Light Tower & Relay Adapter, GSM modem & more available.

Room Alert 3 Wi-Fi (RA3W)



- Can accommodate **3+ sensors**. Built-in Digital Temperature Sensor.
- Includes 1 Digital Sensor Port and 1 Switch Sensor Channel.
- Use Room Alert 3 Wi-Fi's built-in web interface, local Room Alert management software, or RoomAlert.com Account (included) to monitor units across your network.
- Room Alert 3 Wi-Fi allows real-time monitoring, advanced alerting by email/email-to-SMS and more, Fahrenheit/Celsius, high/low watermarks, PUSH technology, logging/graphing software, shutdown, reboot and log off capabilities & much more.
- IEEE 802.11 b/g and IEEE 802.11n (single stream) WLAN interface (2.4 GHz only); IEEE 802.11 d/h/i/j/k/w/r; IEEE 802.11i Support - WPA-Personal, WPA2-Personal, WEP (client only).
- Operate Room Alert 3 Wi-Fi with or without a host system. That's right... *No PC Required!*



\$CALL
RA3W-ESO-BAS

INCLUDES: Room Alert 3 Wi-Fi ID Box (0U, 3-5/8" L x 1-3/4" W x 1" H), built-in Digital Temperature Sensor, 1 external Digital Sensor Port (RJ-11), 1 Switch Sensor Channel, Factory Reset Button, Wi-Fi capabilities, PUSH technology, 5V Power Adapter (110/240 V, RoHS), built-in web interface, downloadable *Room Alert 3 Wi-Fi User's Guide & Reference Manual*, 1 Year of RoomAlert.com Personal account access with free 90 day Professional upgrade (with any Room Alert monitor purchase), Room Alert Manager software available on Professional tier or higher, Lifetime Support, Lifetime Firmware Updates, '30-Day Satisfaction Guarantee'. Optional sensors, Mini UPS, service upgrades, GSM modem & more available.

Room Alert Account with Monitor360™

Manage Devices... Anywhere... Anytime!™

The RoomAlert.com Account portal is designed to make it easy to monitor temperature and environmental conditions from anywhere, at any time, online via the web. Enjoy the same alert interface from any device.

RoomAlert.com is designed specifically to assist with Room Alert monitoring of temperature and other environmental conditions without the worries of installing software and updates, running regular data backups, or setting up an email server. RoomAlert.com handles all of this automatically online, with a user experience that is always consistent whether on a desktop, laptop, tablet or mobile device.

Room Alert takes proactive monitoring one step further with our new patented **Monitor360** technology to help users better react to possible environment concerns in their facility. **Monitor360** gives each Room Alert user the ability to create their own virtual sensors, alerts, and reports using countless combinations of the sensors in use, providing an unparalleled level of proactive monitoring.



Customized Environment Monitoring Solutions

Temperature



Digital Temperature



Digital Temperature & Humidity



Digital Extreme Temperature Sensor



Power



Digital Active Power w/ Temperature Sensor



Power Sensor



Current Loop Sensor



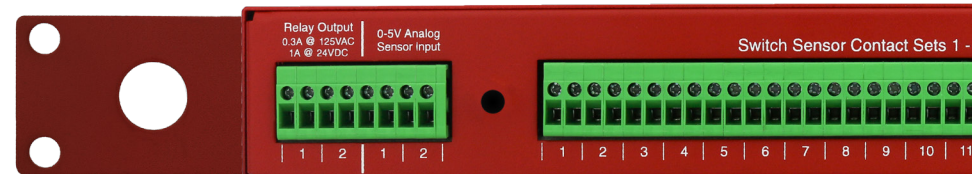
Room Alert 32S



Power Status LED

Ethernet Port

External Digital Sensor Ports



Relay Output Ports

Analog Input Ports



External Switch Sensor Ports



Accessories



Mini UPS & Power Sensor



Relay Switch

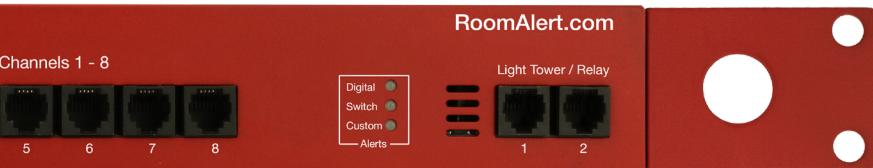


iBoot IO

Our Full Line Of Room Alert Sensors And Accessories

Solutions For Every Facility And Situation

Example Layout



Digital ports  PoE, WLAN & Alarm LEDs Light Tower & Relay Adapter Ports



 Reset Button Battery Back-Up On / Off Button Power Port

Series



ch Sensor



iBoot G2S

Flood / Leak

Flood Sensor w/Cable (8')



8'

Flood Sensor w/Cable (24')



24'

Flood Sensor (Spot)



Security

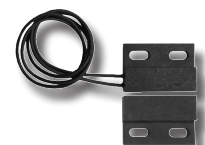
Motion Sensor



Smoke Sensor w/Escape Light



Room Entry Sensor



Accessories Can Be Found At AVTECH.com

**PATENTED
HOT**



RMA-DAP-SEN
RMA-DAP25-SEN
RMA-DAP50-SEN
RMA-DAP100-SEN

Digital Active Power w/Temperature Sensor



- Monitors active current from 100 to 1800 Watts.
- Real-time temperature sensor.
- Temperature range: -40 to 185° F, -40 to 85° C.
- Compatible with Room Alert 32E/W/S, 12E/S, 4E, 3E/W/S.
- Options include sensor with attached cables of 10', 25', 50' and 100' length. Max cable distance is 100'.

INCLUDES: Digital Active Power Sensor With 10' Micro-USB to RJ-11 Cable & Installation Note.

BEST SELLER



TMP-SDT-SEN
TMP-DT50-SEN
TMP-DT100-SEN

Digital Temperature Sensor

- Real-time temperature sensor.
- Temperature range: -67 to 257° F, -55 to 125° C.
- Compatible with Room Alert 32E/W/S, 12E/S, 4E, 3E/W/S.
- Options include sensor with attached cables of 25', 50' and 100' length. Max cable distance is 100'.

INCLUDES: Digital Temperature Sensor With 25' RJ-11 Cable & Installation Note.

OUTDOOR

Digital Outdoor Temperature Sensor



TMP-DOT-SEN
TMP-DOT50-SEN
TMP-DOT100-SEN

- Real-time temperature sensor.
- Temperature range: -67 to 257° F, -55 to 125° C.
- Silicon coating offers extra resilience for monitoring outdoors or in other harsh environments.
- Compatible with Room Alert 32E/W/S, 12E/S, 4E, 3E/W/S.
- Options include sensor with attached cables of 25', 50' and 100' length. Max cable distance is 100'.

INCLUDES: Digital Outdoor Temperature Sensor With 25' RJ-11 Cable & Installation Note.

LAB READY

Digital Fluid Temperature Sensor



TMP-DFT-SEN
TMP-DFT50-SEN
TMP-DFT100-SEN

- Real-time fluid temperature sensor.
- Temperature range: -67 to 257° F, -55 to 125° C.
- Perfect for cooler or freezer monitoring of food, medicines and fluid temperature.
- Compatible with Room Alert 32E/W/S, 12E/S, 4E, 3E/W/S.
- Options include sensor with attached cables of 25', 50' and 100' length. Max cable distance is 100'.

INCLUDES: Digital Fluid Temperature Sensor With 25' RJ-11 Cable & Installation Note.

BEST SELLER

Digital Temperature & Humidity Sensor



RMA-DTH-SEN
RMA-DTH50-SEN
RMA-DTH100-SEN

- Real-time temperature, humidity, dew point, and heat index (feels like).
- Temperature range: -40 to 185° F, -40 to 85° C.
- Relative humidity range: 5 to 95% non-condensing.
- Compatible with Room Alert 32E/W/S, 12E/S, 4E, 3E/W/S.
- Options include sensor with attached cables of 25', 50' and 100' length. Max cable distance is 100'.

INCLUDES: Digital Temperature & Humidity Sensor With 25' RJ-11 Cable & Installation Note.

Digital Extreme Temperature Sensor



RMA-DET-SEN

- Real-time extreme temperature sensor.
- Temperature range: -328 to 932° F, -200 to 500° C.
- Stainless steel sensor tip with 40" steel lead wires.
- Perfect for cold storage, laboratories, or specific manufacturing environments.
- Max sensor cable distance up to 100', includes 25'.
- Compatible with Room Alert 32E/S, 12E/S, 4E & 3E/S manufactured in 2021 or later.

INCLUDES: Digital Extreme Temperature Sensor With 25' RJ-11 Cord & Installation Note.

NEW!!!

Digital Temperature & Air Flow Sensor

NEW



RMA-DTH-SEN
RMA-DTH50-SEN
RMA-DTH100-SEN

- Real-time temperature and air flow.
- Temperature range: -40 to 185° F, -40 to 85° C.
- Air speed range: 0 f/m to 2952.76 f/m (0 m/s to 15 m/s).
- Air speed accuracy: 5%.
- Compatible with Room Alert 32S, 12S, 3S.

INCLUDES: Digital Temperature & Humidity Sensor With 25' RJ-11 Cable & Installation Note.

BEST SELLER

Main Power Sensor



RMA-PS1-SEN

- Real-time main power on/off status.
- Monitors main, UPS or single phase power.
- Max sensor cable distance up to 900', includes 25'.
- Compatible with Room Alert 32E/W/S, 12E/S, 4E, 3E/W/S.

INCLUDES: Main Power Sensor With 25' Cable, 5V Power Adapter & Installation Note.

* More Sensors, Cameras, Packages & Accessories Online.

Order through your favorite reseller or online.

Sensors & More

BEST SELLER

Flood Sensor w/8' Cable



RMA-F008-SEN

- Real-time recognition of water/flood anywhere along the length of the patented flood cable.
- 8' Flood Cable with 25' RJ-11 leader cable.
- Alert triggered when sensor is activated or power lost.
- Max sensor cable distance up to 900', includes 25'.
- Compatible with Room Alert 32E/W/S, 12E/S, 4E, 3E/W/S.

INCLUDES: Flood Sensor With 8' Flood Cable & 25' RJ-11 Leader Cable, 25' Sensor Cable, 5V Power Adapter, Mounting Screws & Installation Note.

BEST VALUE

Flood Sensor w/24' Cable



RMA-F024-SEN

- Real-time recognition of water/flood anywhere along the length of the patented flood cable.
- 24' Flood Cable with 25' RJ-11 leader cable.
- Alert triggered when sensor is activated or power lost.
- Max sensor cable distance up to 900', includes 25'.
- Compatible with Room Alert 32E/W/S, 12E/S, 4E, 3E/W/S.

INCLUDES: Flood Sensor With 24' Flood Cable & 25' RJ-11 Leader Cable, 25' Sensor Cable, 5V Power Adapter, Mounting Screws & Installation Note.

HEAVY DUTY

Flood Sensor (Spot)

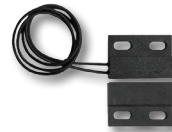


RMA-FS2-SEN

- Real-time recognition of flood/water under pod.
- Specially designed to interface with Room Alert.
- Powered by 9V Alkaline battery (included).
- Max sensor cable distance up to 900', includes 25'.
- Compatible with Room Alert 32E/W/S, 12E/S, 4E, 3E/W/S.

INCLUDES: Flood Sensor (Spot) With 25' Cable, 9V Alkaline Battery & Installation Note.

Room Entry Sensor



RMA-RE1-SEN

- Easy recognition of door/cabinet open or closed status.
- Standard use on door or window and adjoining frame.
- Max sensor cable distance up to 900', includes 25'.
- Compatible with Room Alert 32E/W/S, 12E/S, 4E, 3E/W/S.

INCLUDES: Room Entry Sensor With 25' Cable & Installation Note.

Smoke Sensor w/Escape Light



RMA-SS1-SEN

- Real-time recognition of smoke or fire.
- Audible alert and 'escape' light is triggered when sensor is activated due to smoke or fire.
- Powered by 9V Alkaline battery (included).
- Max sensor cable distance up to 900', includes 25'.
- Compatible with Room Alert 32E/W/S, 12E/S, 4E, 3E/W/S.

INCLUDES: Smoke Sensor w/Escape Light, 25' Cable, 9V Alkaline Battery, Mounting Screws & Installation Note.

Motion Sensor



RMA-MOT2-SEN

- Detect motion up to approximately 35' with 84° angle.
- Alert triggered when sensor is activated.
- Powered by 12V power adapter (included).
- Max sensor cable distance up to 900', includes 25'.
- Compatible with Room Alert 32E/W/S, 12E/S, 4E, 3E/W/S.

INCLUDES: Motion Sensor With 25' Cable, 12V Power Adapter & Installation Note.

Current Loop 1 (0-50A)



RMA-CL1-SEN

- Monitors electrical current flowing through a single-phase powered cable.
- Monitor output: 0-10A, 0-20A & 0-50A.
- Connects via Room Alert Analog Sensor Port or Digital Temperature & Analog Sensor.
- Operates in 0 - 95% RH, non-condensing environment.
- Low-voltage 2-wire cable connection.
- Compatible with Room Alert 32E/W/S, 12E/S & Digital Temperature & Analog Sensor.

INCLUDES: Current Loop 1 With 25' Cable, Mounting Screws & Installation Note.

Current Loop 2 (0-250A)



RMA-CL2-SEN

- Monitors electrical current flowing through a single-phase powered cable.
- Monitor output: 0-100A, 0-200A & 0-250A.
- Connects via Room Alert Analog Sensor Port or Digital Temperature & Analog Sensor.
- Operates in 0 - 95% RH, non-condensing environment.
- Low-voltage 2-wire cable connection.
- Compatible with Room Alert 32E/W/S, 12E/S & Digital Temperature & Analog Sensor.

INCLUDES: Current Loop 2 With 25' Cable, Mounting Screws & Installation Note.

* More Sensors, Cameras, Packages & Accessories Online.

Order through your favorite reseller or online.

Sensors & More

iBoot IO



IBO-IO-REL

- Toggle external devices on or off based on alerts or specific environment conditions detected by Room Alert.
- Max cable distance up to 330'.
- UL Listed Power Switch.
- Compatible with Room Alert 32E/W/S, 12E/S, 4E, 3E/S.

INCLUDES: iBoot IO With Power Inlet and Out Cords & Installation Note.

iBoot G2S



IBO-G2S-SWI

- Easily and quickly add immediate remote reboot capabilities for nearly any device.
- Heartbeat feature provides automatic reboot if a network device does not respond to pings.
- Max cable distance up to 330'.
- Compatible with Room Alert 32E/W/S, 12E/S, 4E, 3E/S.

INCLUDES: iBoot G2S With Power Inlet and Out Cords & Installation Note.

BEST SELLER

Air Flow 1 Sensor (NC)



RMA-AF1-SEN (NC)

- Real-time recognition of air flow stop/start.
- Use in HVAC duct, under raised floors, or near fan.
- Max sensor cable distance up to 900', includes 25'.
- Recommended for IT installations.
- Compatible with Room Alert 32E/W/S, 12E/S, 4E, 3E/W/S.

INCLUDES: Air Flow 1 Sensor (Normally Closed) With 25' Cable & Installation Note.

Air Flow 2 Sensor (NO)



RMA-AF2-SEN (NO)

- Real-time recognition of air flow stop/start.
- Use in HVAC duct, under raised floors, or near a fan.
- Max sensor cable distance up to 900', includes 25'.

INCLUDES: Air Flow 2 Sensor (Normally Open) With 25' Cable & Installation Note.

POPULAR

Light Tower w/Audio **



ST-RYG-LT

- Light Tower lights turn on when alarms are detected (i.e. pings fail, high temps, room entry, etc.).
- Lights turn on/off via SNMP set, URL & interactively via AVTECH's Room Alert management software.
- Adjustable audio alarm with intensity range of 0 to 95 dB (at 1m).
- Includes 15' Light Cable; 25' Extension Cable available.
- Room Alert 32E/W/S, 12E/S & 3E require LT-32-ADP.
- Compatible with Room Alert 32E/W/S, 12E/S, 4E & 3E/S.

INCLUDES: Light Tower w/Audio, Red, Yellow & Green Lights, 15' Cable, Mounting Bracket & Installation Note.

Relay Switch Sensor (Low Voltage) **



RMA-RELAY-SEN

- Allows low voltage devices to be turned on/off.
- Four (4) device relays with visible relay status lights.
- Relays support 0.3A at 125VAC or 1A at 24VDC.
- Room Alert 32E/W/S, 12E/S & 3E require LT-32-ADP.
- Compatible with Room Alert 32E/W/S, 12E/S, 4E & 3E/S.

INCLUDES: Relay Switch Sensor With 25' Cable & Installation Note.

25' Light Tower w/Audio Extension



ST-025G2-CAB

- Designed to extend the length of AVTECH's Light Tower w/Audio.
- Cable can be extended by adding multiple 25' extensions. Maximum extension length is 100'.
- Requires a connection in-line between AVTECH's Light Tower w/Audio and Light Tower & Relay Adapter or Room Alert 4E environment monitor.
- Compatible with Light Tower w/Audio ONLY.

INCLUDES: 25' Light Tower Extension Cable & Installation Note.

Light Tower & Relay Adapter **



LT-32-ADP

- Required to connect the Light Tower w/Audio or Relay Switch Sensor to Room Alert 32E/W/S, 12E/S or 3E/S.
- Allows Light Tower, Light Tower w/Audio or Relay Switch Sensor installs up to 100' away from Room Alert ID box via RJ-11.
- Includes one (1) relay that can be used to turn on/off low voltage devices automatically in response to an alarm condition and uses separate 5V power supply.

INCLUDES: Light Tower & Relay Adapter, 25' RJ-11 Cable, 5V Power Adapter & Installation Note.

* More Sensors, Cameras, Packages & Accessories Online.

** Room Alert 32E/W/S, 12E/S & 3E/S require use of LT-32-ADP.

Order through your favorite reseller or online.

How To Purchase AVTECH Products

AVTECH products are available for purchase around the world and used in 187 of 196 countries. You can purchase through your favorite reseller, direct from AVTECH, or online. When ordering * from AVTECH, we are happy to accept your organization's purchase order (PO), as well as payment via credit card or wire transfer. Most orders ship the same or next business day.

Resellers: Order Through Your Favorite Reseller - Ask them to contact AVTECH on your behalf. AVTECH has an established and professional network of Resellers world-wide and can recommend a local Reseller. Resellers may have local stock & coordinate import to reduce costs.

Phone: 888.220.6700 / 401.628.1600 (9-5 EST) - Call AVTECH direct and ask to speak with a "Product Specialist". They can take your order by phone for immediate processing or provide you with an immediate PDF quote with payment link by email. If you are outside of the U.S.A. or Canada, please ask to speak with an "International Product Specialist" as they can address international concerns.

Online: AVTECH.com (Anytime) - Place your order online for immediate processing. International money rates are automatically converted by your bank as prices are in U.S. Dollars (USD).

Email: Orders@AVTECH.com (Anytime) - Send your organization's purchase order (PO), completed and scanned quote form or order instructions to AVTECH via email. We only accept POs in PDF format. Save your Word and Excel POs as a PDF. Other file formats are not accepted.

* NOTE: International orders ship when payment in U.S.D. is received. Wire transfer or credit card payment is preferred. Checks must be in U.S.D., include a U.S. routing code, and drawn on a U.S. bank. Thank you.

RoomAlert.com Account Extended Service & Support

RoomAlert.com is AVTECH's online dashboard for customers worldwide that work with Room Alert monitors and includes all of AVTECH's options for upgraded service and support. It provides:

- Non-expiring RoomAlert.com Account access to online portal
- AVTECH's 30 Day Satisfaction Guarantee on new purchases
- Coverage under AVTECH's hardware Limited Warranty service
- Download access to licensed firmware, software & MIBs
- Access to U.S. based technical support services
- Access to your product specialist or reseller
- Tracking of upgrades, orders, shipments and deliveries
- Subscription setup, upgrades and ongoing account management
- Management of your contact and billing information

During your active service at RoomAlert.com, AVTECH will make all of the above available to the user and those people that share their service. However, the RoomAlert.com Account is more than just a source for downloads, technical support and managing your account. It is AVTECH's advanced online solution for monitoring Room Alert devices... the world's most popular IT & facilities environment monitors. Your RoomAlert.com Account enables anyone to use Room Alert monitors, regardless of their skill level or technical capabilities. Even better, users enjoy the same look and feel from any mobile device, whether they use a phone, tablet, laptop or desktop computer. Check it out and see for yourself why many of the worlds leading corporations call it, "The best management platform of its class". RoomAlert.com allows users to monitor, alert, log, graph, map, view, report, manage and protect.

Technical Support services are available 9-5 EST Monday through Friday. The best way to start a support request is by opening a ticket online at RoomAlert.com. There are many resources, FAQs and videos online through the Support page.

Portal: RoomAlert.com

Email: Support@AVTECH.com

U.S. Headquarters
16 Cutler Street, Cutler Mill
Warren, RI 02885 USA

International Distribution
Unit 105, Bay O
Shannon Free Zone West

Contact Us

AVTECH Software, Inc.
16 Cutler Street, Cutler Mill
Warren, RI 02885-2761 USA

Sales: 888.220.6700
Phone: 401.628.1600
Fax: 401.628.1601

Visit Us Online

AVTECH.com
RoomAlert.com

Most Orders Ship the Same or Next Business Day.
Import Duties and Taxes are the Responsibility of Recipient.

Trademarks

© Copyright 1988-2022
AVTECH Software, Inc.
All Rights Reserved Worldwide.
AVTECH, AVTECH Software
AVTECH.com, AVTECHSoftware.com,
Device Manager, EnvironmentMonitor.com,
'Environment Monitoring Made Easy!'
'Protect Your Facility... Don't Wait Until It's
Too Late!', Room Alert, RoomAlert.com,
Monitor360, & Room Alert Manager.

Privacy Promise

AVTECH does not sell or share your email or other contact information, however, AVTECH uses some email marketing because our prospects and customers consider it important and convenient. When we do, AVTECH provides customers with an easy means to decline further email of that type.

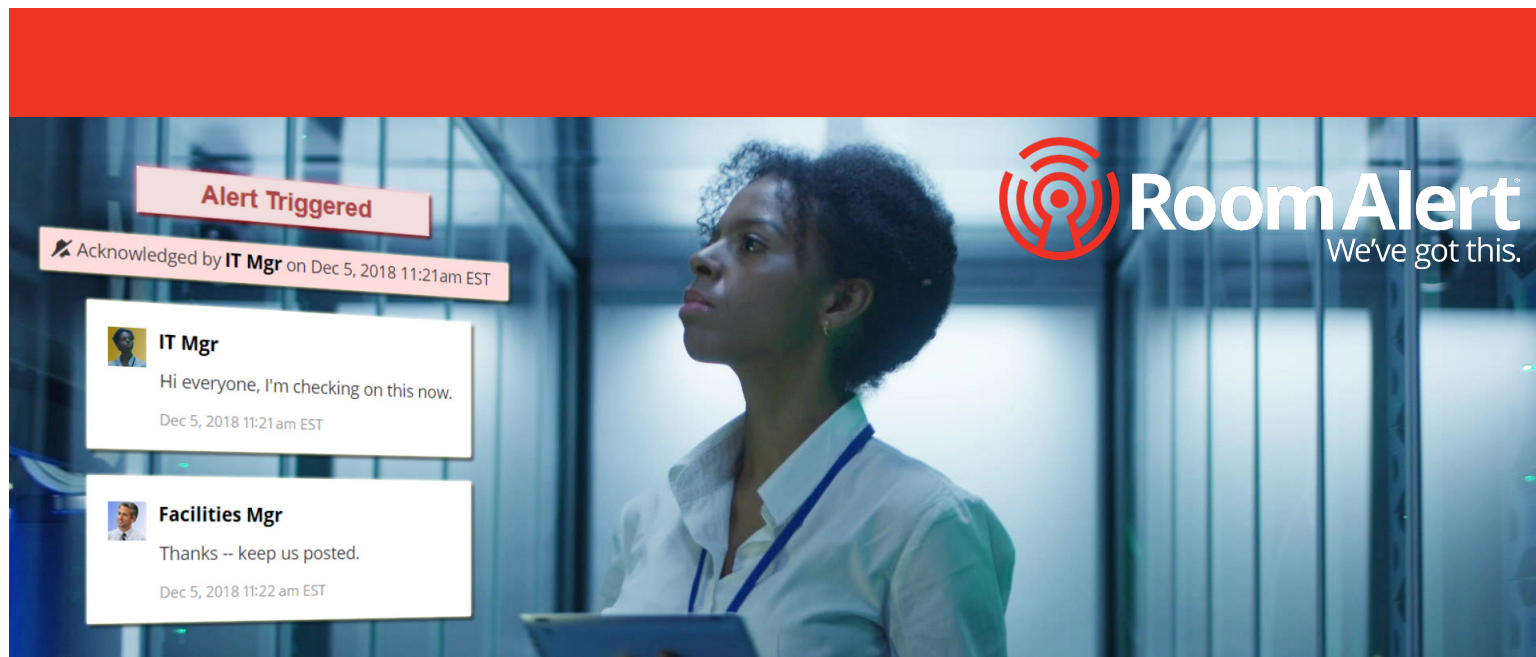
Current Versions

To confirm your organization is running current software and firmware versions or to download these versions for any licensed AVTECH product, log in at RoomAlert.com and use your non-expiring account to look for the 'Current Versions' box on the 'Downloads' page, then update for free.

Tell Us Your Story

We truly want to know when we do well and when we miss expectations. Working to provide the best products and services at the highest security level means making changes that typically succeed and sometimes fall short.

Please email us your feedback at
Feedback@AVTECH.com.
It is always appreciated. Thank you.



1) Know Immediately If And When Problems Arise

Knowing what happens on a timely basis is the most important part of managing and responding appropriately, whether protecting people, product or processes.

2) Reduce Or Eliminate Downtime

Organizations of all types and sizes must remain online and operating to be relevant. In today's world, being offline leads people to do business elsewhere.

3) Maintain Maximum Energy And Resource Efficiency

Equipment and processes consume resources that cost money. The difference between profitability and going out of business can often be traced to efficiency.

4) Protect And Extend The Life Of Equipment, Product And Property

Whether managing IT equipment, consumable goods or the structure housing a business, getting maximum use and life out of valuable resources is vital.

5) Maximize Reliability For Users And Peace-Of-Mind For Managers

All organizations have people that depend on and manage resources that make business possible. High dependability increases productivity and reduces stress.

6) Stay Online And Open For Business

If a business goes offline internally or externally, people and processes are immediately interrupted. When this occurs, business stops and customers move on.

...

When seeking to protect your organization, consider the market leader... **Room Alert**. In business since 1988, Room Alert monitors now protect organizations in 187 of 196 countries, on Antarctica and in space. They help save many billions of dollars in losses each year and in some cases the organization itself. Call an AVTECH Product Specialist or a professional IT reseller today about Room Alert and protect your people, property, and productivity to provide you with peace of mind.

Order direct from AVTECH or online at AVTECH.com.