



DATA SHEET

# Aternity Application Performance Monitoring (APM)

Simplified high definition monitoring that is scalable, easy to use and deploy, and unifies APM visibility across end users, applications, networks, and the cloud-native ecosystem.

Customers and employees alike, expect smooth and meaningful digital experiences to get things done.

Businesses rely on IT to build and deliver apps and infrastructure to meet these expectations. To keep pace, IT is in the process of adopting technologies—cloud, mobile, and analytics—to deliver innovative apps and support digital business. With Aternity's **big data technology** you get complete insight into the modern application technology stack, with full diagnostic detail for every transaction, at any scale.

## One solution for all your monitoring needs, on and off the cloud

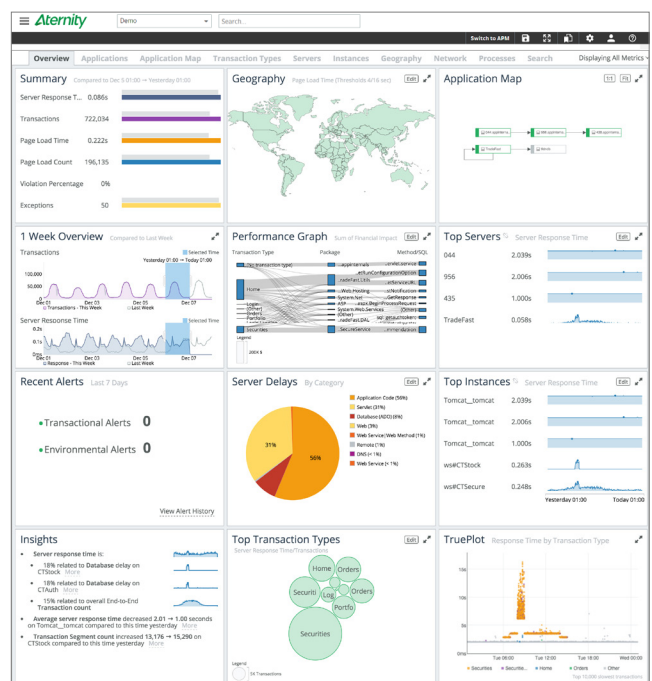
**Application performance insights:** Trace every transaction from user to back-end. Understand app dependencies, or expose and fix even the most hard-to-detect code, SQL, web services, or resource utilization problems quickly.

**User experience and business insights:** Understand your users' satisfaction and trends in real-time. Identify your application's best and least used features, and quantify financial impact on business results.

**Cloud-native ecosystem visibility:** Get full operational visibility into transactions, containers, and microservices running on modern cloud-based application infrastructure, including Docker, Kubernetes, Pivotal Platform, Red Hat OpenShift, AWS, Azure, and Google Cloud.

## Never miss a performance problem

Armed with the most complete distributed tracing in the industry, you're never more than two clicks away from an answer when alerted of a problem.

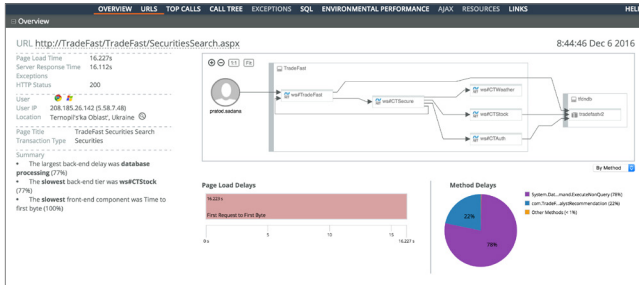


Aternity APM traces every transaction across every tier, while capturing systems metrics every second even in high-throughput production environments. This gives you complete and granular visibility for root cause analysis and problem discovery.

Unlike other solutions that often sample transactions and roll-up metrics into intervals of 1-minute or more, Aternity APM's detailed reporting exposes and diagnoses even sporadic and intermittent problems.

## Reconstruct & diagnose past incidents

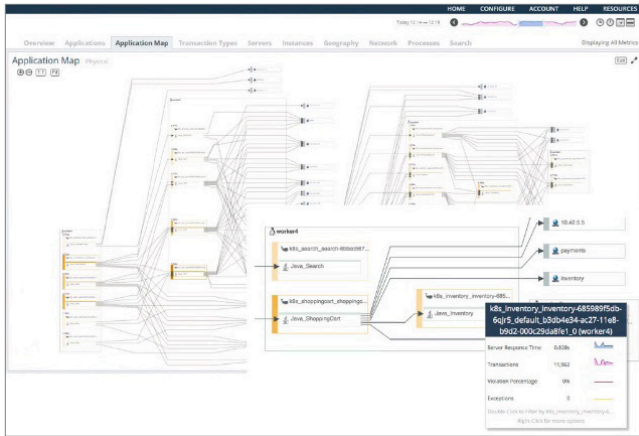
Aternity APM stores a record of every transaction along with its associated system metrics, call trees including parameters, URLs, log messages, user information, network conversations and web service calls. As a result, users can reconstruct past incidents in great detail, measure impact, and act decisively to fix issues.



Other solutions only partially store data associated with past transactions. This leads to missing evidence, creates blind spots, and fails to find root cause.

## Manage distributed environments

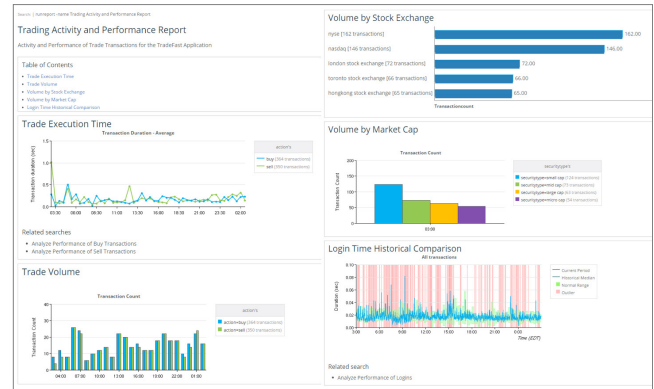
Seamlessly monitor and manage your dynamic infrastructure, including data centers, IaaS, PaaS, and containerized environments.



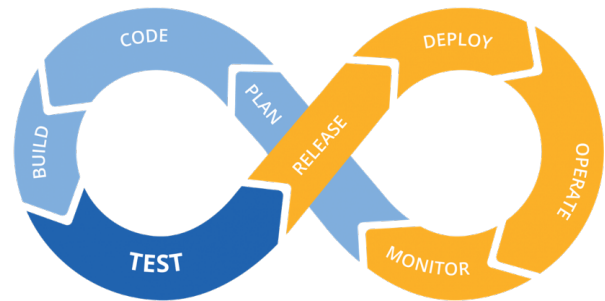
Aternity APM accurately correlates and stitches the end-to-end path for every single user transaction unlike other solutions that only produce an aggregated map based on patchy data.

## Derive business & application intelligence

Query across billions of transactions and use AI and business-relevant analytics to discover anomalies and draw application insights.



Perform free form analysis to filter down by transaction type, user, server, method parameter, etc. Discover and optimize key business transactions and prioritize development efforts based on the financial impact on the business.



## Collaborate across the application lifecycle

Measure impact and share performance insights and diagnostics across development, QA, and production.

Detailed diagnostics help development and support teams fix problems without having to reproduce them, resulting in faster time to resolution.

## Get started in minutes

Offered as SaaS and on-premises software. Try for free at [www.aternity.com/try-aternity-apm](http://www.aternity.com/try-aternity-apm)

