

# Papertrail makes troubleshooting easier

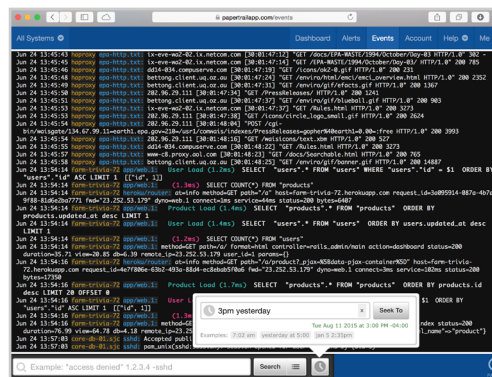
**Instant log visibility.** The Papertrail time-saving log tools include fast lightning search, flexible system groups, team-wide access, long-term archives, charts and analytics exports, monitoring webhooks, and typically a 45-second setup.

**Realize value from logs you already collect.** Track down critical customer problems, error messages, app requests, slow DB queries, and config changes. Quickly visualize patterns and identify anomalies with log velocity analytics.

## FEATURES

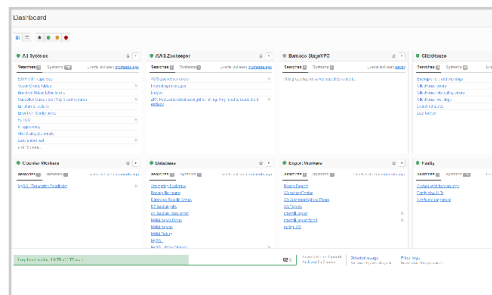
### Troubleshoot fast

Diagnosing a monitoring alert, app server error, customer service ticket, or missing email? Just search or tail messages, metadata, even substrings. Jump to a time, system, group of systems, or context. Save searches to reuse and even show to coworkers. With lightning search and velocity graphs, faster log searches and error visualization result in quicker diagnoses and shorter time to resolution.



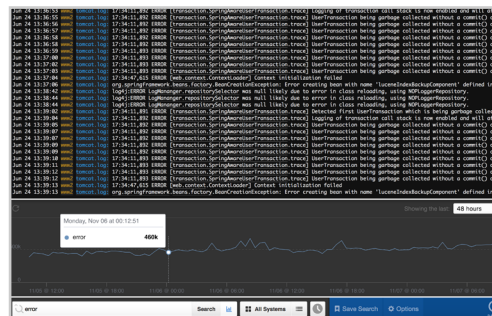
### See related events together

Create flexible log views in a few clicks. Turn related systems into event streams, like NY colo, Big App, or DB servers. Automatically put new systems in the right place using hostname wildcards. Save searches to create a "curated" log dashboard.



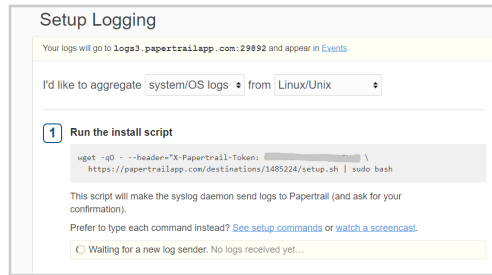
### Spread visibility around

Help less-technical staff take advantage of logs (without SSH/RDP knowledge or access). A lead engineer can populate groups, searches, and alerts that the team can use. Stay current without logging in. Receive nightly summary emails and copy-friendly links. One syntax works for web, CLI, and API.



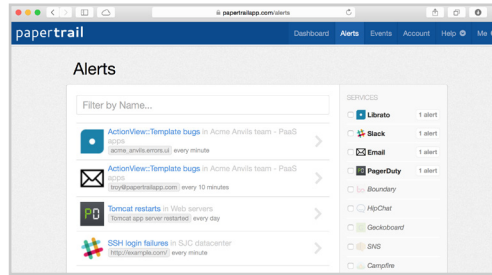
### Get back to work

Typically setup averages 45 seconds and works with autoscaling cloud systems, VPSes, NAT, dynamic IPs, and log hosts. Papertrail is fully supported and you can use any common syslog daemon or our collector for text log files.



### React and Analyze

Mix in other web services and your own apps. Have Papertrail notify your app via HTTP when a search has new matching logs. Your app can reside anywhere on the internet.



### PRICING

Pricing is customized and determined by volume and searchable duration. Everyone gets one-year archive, optional pay-as-you-go additional usage, and unlimited noise filtering. Example plans below.

FREE	\$7/MONTH	\$18/MONTH	\$35/MONTH
50 MB	1 GB	2 GB	4 GB
48 hours search	1 week search	1 week search	2 weeks search
1 week archive	1 year archive	1 year archive	1 year archive
\$75/MONTH	\$150/MONTH	\$230/MONTH	FROM \$230/MONTH
8 GB	16 GB	25 GB	CUSTOM (25 GB UP TO 1500 GB)
2 weeks search	2 weeks search	2 weeks search	up to 4 weeks search
1 year archive	1 year archive	1 year archive	1 year archive

The amount of data is per month. Pricing shown in USD. Pricing as of Oct 1, 2018. See [papertrail.com](http://papertrail.com) for details.

### PAPERTRAIL AGGREGATES...

- » Syslog
- » Text log files
- » Apache®
- » MySQL®
- » Cloud hosting
- » Ruby on Rails®
- » Windows® events
- » Tomcat®
- » Heroku® apps
- » Routers and firewalls

... and many more. No more digging through dozens of log files and directories.