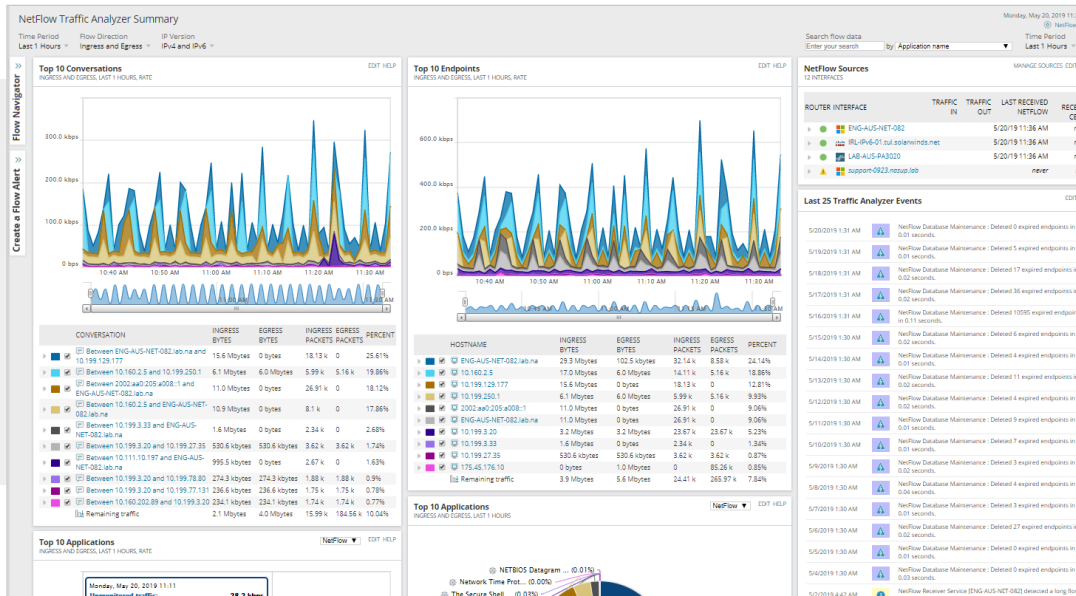


NetFlow Traffic Analyzer

Real-Time Network Utilization and Bandwidth Monitoring



SolarWinds® NetFlow Traffic Analyzer (NTA) allows you to capture data from continuous streams of network traffic and convert those raw numbers into easy-to-interpret charts and tables that quantify how much traffic is on the corporate network and which applications are being used.

[DOWNLOAD FREE TRIAL](#)

Fully Functional for 30 Days

WHY CHOOSE NETFLOW TRAFFIC ANALYZER?

- » NTA collects and analyzes flow data from multiple vendors, including NetFlow v5 and v9, Juniper® J-Flow™, sFlow®, Huawei® NetStream™, and IPFIX.
- » NTA alerts you to changes in application traffic or if a device stops sending flow data
- » NTA supports advanced application recognition with Cisco® NBAR2
- » NTA shows pre- and post-policy CBQoS class maps so you can optimize your CBQoS policies
- » NTA can help you identify malicious or malformed traffic with port 0 monitoring
- » NTA includes WLC network traffic analysis so you can see what's using your wireless bandwidth
- » NTA supplements Network Performance Monitor by helping to identify the cause of high bandwidth. Built on the Orion® Platform, NTA provides the ability to purchase and fully integrate with additional network monitoring modules (config management, WAN management, VoIP, device tracking, IP address management), as well as systems, storage, and virtualization management in a single web console

FEATURES

NEW in version 4.6:

IPv6 flow records

Consumption and presentation of IPv6 flow records exported from network devices

Network Insight™ for Palo Alto Networks®

Network Insight™ for Palo Alto Networks® includes collection of flow from Palo Alto firewalls to show flow through nodes and interfaces

Azure SQL Database Deployment option

Flexible deployment options with Azure SQL Database: Take charge of your NTA deployment with flexibility to deploy NTA either on-premises or in the cloud with Azure SQL Database or Amazon RDS

Local Traffic data

Gain visibility to traffic sourced from and destined to the flow data server by adding a new source of traffic data, enabling users to immediately characterize local traffic

Bandwidth Utilization Monitoring

Bandwidth Threshold Alerting

Delivers an instant alert notification, including a list of top talkers when an interface exceeds its bandwidth utilization threshold.

Bandwidth Usage by Application

Provides valuable insights into which applications are consuming the most network bandwidth, and tracks application traffic arriving from designated ports, source IPs, destination IPs, and even protocols.

Bandwidth Usage by IP Groups

Analyzes network traffic with custom overlapping IP address groups. Create your own IP address groups to view network traffic the way you want to see it.

Network Traffic Monitoring and Forensics

Traffic Analysis Dashboard

Delivers a comprehensive, customizable view of your network traffic on a single pane of glass, helping you spot potential problems quickly with top ten views of network traffic data. Get to the root cause of bandwidth issues with an intuitive point-and-click interface.

[DOWNLOAD FREE TRIAL](#)

Fully Functional for 30 Days

Cross-stack Network Data Correlation

Accelerate identification of root cause by dragging and dropping network performance metrics on a common timeline for immediate visual correlation across all your network data.

Network Traffic Forensics

Enables you to drill down into any element's traffic using multiple views to get the perspective you need. You can investigate and isolate excessive network bandwidth utilization and unexpected application traffic.

CBQoS Performance Views

Enables you to view network traffic segmented by Class of Service methods, measure effectiveness of your CBQoS policies, and quantify bandwidth consumption by class map.

Port 0 Monitoring

TCP/UDP monitoring of port 0 traffic highlights any flows directed to port 0 so you can identify intrusive traffic.

Autonomous System Traffic Analysis

Autonomous system traffic monitoring allows you to see traffic routed through your ISP connections.

Flow-based Monitoring and Reporting

Multi-Vendor Device Support

- » Analyzes Cisco NBAR2 and NetFlow v5 and v9, Juniper J-Flow, IPFIX, sFlow, Huawei NetStream, and other flow data
- » Supports devices from Cisco, Palo Alto Networks, HP®, Juniper, Huawei, Extreme Networks®, Nortel Networks®, and other leading vendors
- » Supports IPFIX traffic from VMware® vSwitch

Alert on Flow

Get alerted so you can quickly act if application traffic suddenly increases, decreases, or disappears completely. Set alerts to be notified when a device stops sending flow data, so you can efficiently remediate the problem.

Flow-based Reporting

Enables you to create in-depth network traffic reports with a few clicks, or schedule automatic weekly delivery to your team.

Flow Navigator

Build complex, multi-variable filters to help you answer questions faster.

[DOWNLOAD FREE TRIAL](#)

Fully Functional for 30 Days

Top-Talker Optimization

Determines which flows are representative of the majority of bandwidth usage. It stores those flows while disregarding flow data from users and applications that have a negligible impact on overall bandwidth. Boost overall performance of SolarWinds NTA up to 10x when capturing flows that represent 95% of the total network traffic.

SOLARWINDS NETFLOW TRAFFIC ANALYZER DOES MORE

Integrated Fault, Performance, and Configuration Management

Integrates with SolarWinds Network Performance Monitor (NPM), SolarWinds Network Configuration Manager (NCM), and SolarWinds User Device Tracker (UDT). This integration provides a unified solution for fault, performance, configuration management, automated device tracking, and switch port management.

Integration With Microsoft® Active Directory®

Leverages your existing Active Directory user accounts to simplify login and account management.

MINIMUM SYSTEM REQUIREMENTS

NOTE: To deploy SolarWinds NetFlow Traffic Analyzer, SolarWinds Network Performance Monitor (NPM) needs to be installed on the same server. These system requirements define the minimum requirements for NTA installed on the NPM primary poller. Requirements may differ per license level. Visit support.solarwinds.com for more detailed system requirements.

[DOWNLOAD FREE TRIAL](#)

Fully Functional for 30 Days

HARDWARE	MINIMUM REQUIREMENTS
CPU	Orion Server (NPM/NTA Main Poller) – Quad core processor or better NTA Flow Storage Database – 6 core 2.5GHz or better (version 4.4)
Memory	Orion Server (NPM/NTA Main Poller) – 8GB minimum/16GB recommended NTA Flow Storage Database – 32GB (version 4.4)
Hard Drive	Orion Server (NPM/NTA Main Poller) – 20GB minimum/40GB recommended NTA Flow Storage Database – 600GB (version 4.4)

SOFTWARE	MINIMUM REQUIREMENTS
OS	NPM/NTA Main Poller – Windows Server® 2016 or later, Windows Server 2019
Database	<p><i>Main – NTA shares the main SQL database with Network Performance Monitor.</i></p> <p><i>SolarWinds supports Express, Standard, or Enterprise versions of the following:</i></p> <p><i>SQL Server 2014, 2014 SP1, or 2014 SP2</i></p> <p><i>SQL Server 2016, 2016 SP1, or 2016 SP2</i></p> <p><i>SQL Server 2017</i></p> <p><i>Flow Database – Microsoft SQL Server® 2016 SP1 or later</i></p> <p><i>NTA Flow Storage Database – Windows Server 2016 or later, Windows Server 2019</i></p> <p><i>SolarWinds supports both the main database and the NTA SQL Flow Storage database in the same SQL server instance, provided it is SQL 2016 or later.</i></p> <p><i>A connection to Orion SQL database is required because CBQoS data and some additional low-level details are still stored in Orion SQL database.</i></p>

Cloud NTA also supports using Azure SQL Database and Amazon® RDS for flow storage.

NOTE: The minimum server requirements listed assume default configuration. Significantly increasing the polling rate or flow collection rate could result in additional load on the server, which may require a larger CPU or additional memory.

TRY BEFORE YOU BUY. DOWNLOAD A FREE TRIAL.

Network Traffic Analyzer has never been easier. Don't just take our word for it. Download a free 30-day trial to start analyzing network traffic and identifying which endpoints, applications, and protocols are consuming the most bandwidth.

ABOUT SOLARWINDS

SolarWinds (NYSE:SWI) is a leading provider of powerful and affordable IT infrastructure management software. Our products give organizations worldwide, regardless of type, size or IT infrastructure complexity, the power to monitor and manage the performance of their IT environments, whether on-premises, in the cloud, or in hybrid models. We continuously engage with all types of technology professionals—IT operations professionals, DevOps professionals, and managed service providers (MSPs)—to understand the challenges they face maintaining high-performing and highly available IT infrastructures. The insights we gain from engaging with them, in places like our **THWACK**® online community, allow us to build products that solve well-understood IT management challenges in ways that technology professionals want them solved. This focus on the user and commitment to excellence in end-to-end hybrid IT performance management has established SolarWinds as a worldwide leader in network management software and MSP solutions. Learn more today at www.solarwinds.com.

[DOWNLOAD FREE TRIAL](#)[Fully Functional for 30 Days](#)

LEARN MORE

AMERICAS

Phone: 866.530.8100

Fax: 512.682.9301

Email: sales@solarwinds.com

EMEA

Phone: +353 21 5002900

Fax: +353 212 380 232

Email: emeasales@solarwinds.com

APAC

Phone: +65 6593 7600

Fax: +65 6593 7601

Email: apacsales@solarwinds.com

FEDERAL

Federal Reseller and System Integrator Sales

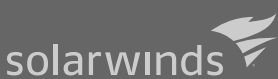
Phone: 877.946.3751

Fax: +353 212 380 232

Email: federalsales@solarwinds.com

For product information about SolarWinds products, visit solarwinds.com, call, or email.

7171 Southwest Parkway | Building 400 | Austin, Texas 78735



For additional information, please contact SolarWinds at 866.530.8100 or email sales@solarwinds.com.

To locate an international reseller near you, visit http://www.solarwinds.com/partners/reseller_locator.aspx

© 2019 SolarWinds Worldwide, LLC. All rights reserved

The SolarWinds, SolarWinds & Design, Orion, and THWACK trademarks are the exclusive property of SolarWinds Worldwide, LLC or its affiliates, are registered with the U.S. Patent and Trademark Office, and may be registered or pending registration in other countries. All other SolarWinds trademarks, service marks, and logos may be common law marks or are registered or pending registration. All other trademarks mentioned herein are used for identification purposes only and are trademarks of (and may be registered trademarks) of their respective companies.

This document may not be reproduced by any means nor modified, decompiled, disassembled, published or distributed, in whole or in part, or translated to any electronic medium or other means without the prior written consent of SolarWinds. All right, title, and interest in and to the software, services, and documentation are and shall remain the exclusive property of SolarWinds, its affiliates, and/or its respective licensors.

SOLARWINDS DISCLAIMS ALL WARRANTIES, CONDITIONS, OR OTHER TERMS, EXPRESS OR IMPLIED, STATUTORY OR OTHERWISE, ON THE DOCUMENTATION, INCLUDING WITHOUT LIMITATION NON-INFRINGEMENT, ACCURACY, COMPLETENESS, OR USEFULNESS OF ANY INFORMATION CONTAINED HEREIN. IN NO EVENT SHALL SOLARWINDS, ITS SUPPLIERS, NOR ITS LICENSORS BE LIABLE FOR ANY DAMAGES, WHETHER ARISING IN TORT, CONTRACT OR ANY OTHER LEGAL THEORY, EVEN IF SOLARWINDS HAS BEEN ADVISED OF THE POSSIBILITY OF SUCH DAMAGES.