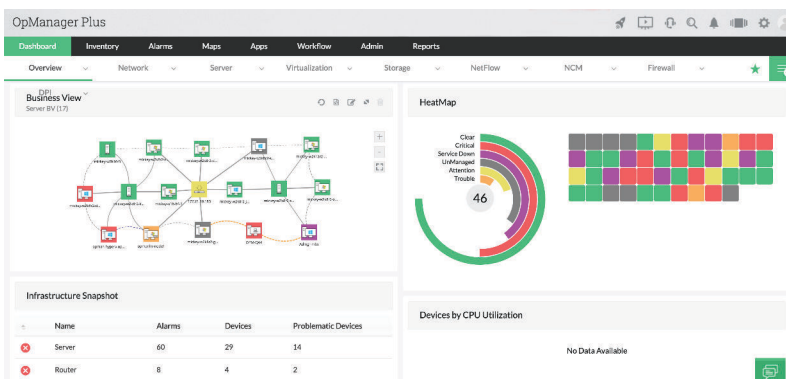


OpManager Plus is an IT Operations Management Solution that proactively monitors the network for performance, storage, bandwidth, configuration changes, compliance, and security. It is 100% web based and supports a wide range of vendors and technologies. It's easy-to-use and works out-of-the-box.

# 5 in 1



## IT Operations Management Solution

- Network Performance Monitoring
- Network Traffic Management
- Configuration Management
- Firewall Log Management
- IP Address and Switch Port Management

## Add-ons

- Application Management
- Storage Monitoring

TRUSTED BY IT ADMINS  
WORLDWIDE

STARTS AT  
\$3,791\*

30 DAY FREE TRIAL  
AVAILABLE.

\* Device Monitoring 50 devices, Net flow monitoring 15 interfaces, Configuration management 15 devices, firewall management 1 device, IP Address & Switch port management - 250 IPs and Switch ports.

## Features

### Network Performance Monitoring

Monitor network devices such as routers, switches, firewalls, load balancers, etc., for health and performance via SNMP and CLI protocols.

### Network Traffic Management

Monitor and analyze bandwidth using Netflow, sFlow, jFlow, IP FIX and more. Find out top conversations, source-destinations & top applications and shape traffic by applying ACL.

### Network Configuration Management

Backup & monitor startup and running configurations of network devices via Telnet and SSH protocols. Get alerts for unauthorized configuration changes.

### Physical & Virtual Server Monitoring

Monitor Windows, Linux, Unix, VMware, Hyper-V & Xen servers for CPU, Memory & Disk utilization. Also, monitor Windows services, TCP services, processes, events and more.

### Firewall Log Management

Collect, archive and analyze firewall logs for security and compliance. Monitor and edit firewall policies to track user behavior and enhance network security.

### IP Address & Switch Port Management

Manage IP addresses (IPv4 & IPv6) and Switch Ports for space, availability and history.

## Dashboards & Maps

Create custom dashboards with 100+ available widgets and group them to view on NOC screen with CCTV views. Also, create business views with custom background and live link between the devices.

## Reports

View and analyze the performance of devices with 100+ built-in reports. Create a personalized set of reports with custom Report Builder, Schedule and email reports.

## Fault Management

Proactively monitor performance of network with multi-level thresholds and get instant notifications via emails and SMS. You can also automate troubleshooting with the help of workflows.

## AlarmsOne

OpManager is tightly integrated with an all-in-one alert management utility called AlarmsOne which enables users with multiple IT management tools to manage all their alerts effectively from a single integrated user-interface.

## Add-ons

### Storage Monitoring

Storage Monitoring helps you to efficiently monitor and manage all the storage devices in your network. Monitor your RAID and Tape Libraries, get forecasts on usage of storage space and manage your FC switches proactively.

### Applications Monitoring

Ensures high uptime and optimal performance of business-critical applications, both within the data center and on the cloud. Provides monitoring support for popular applications and their underlying infrastructure components from a single monitoring console

## Key Differentiators

- Integrated software in single exe
- Common inventory across all modules
- Unified dashboard & snapshot pages
- Common report builder
- Tighter data integration
- Single upgrade
- Faster troubleshooting
- Reduced maintenance footprint

## Minimum System Requirements

**CPU** : Intel Xeon Quad Core, 3.5GHz  
(with 16 logical processors)

**Ram Size** : 32 GB

**Hard Disk** : 100 GB\*\*

### OS Windows:

Windows Server 2012 R2/ 2012/2008 R2/2008.

### OS Linux:

Red Hat, Suse, Fedora and Mandriva (Mandrake Linux)

### Database:

MSSQL 2008, 2012, 2014 and 2016 | OpManager Plus bundled PostgreSQL

\*\* Hard Disk size depends on NetFlow usage and may exceed 100 GB

