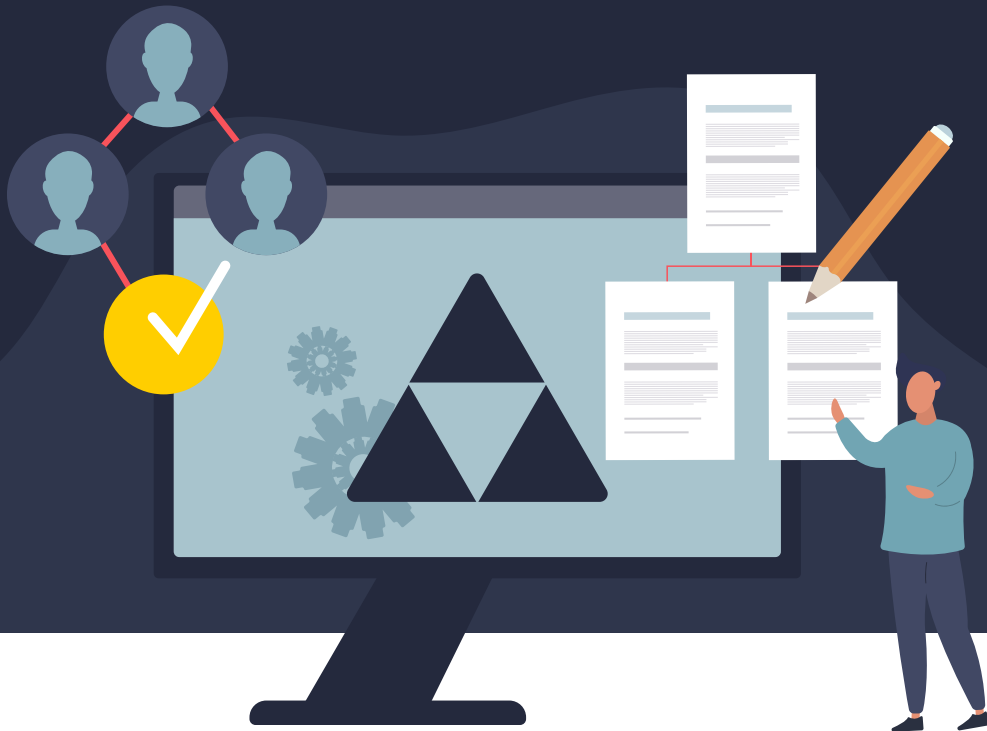


An identity governance and **administration** (IGA) tool for managed service providers (MSPs)



ADManager Plus MSP empowers MSPs to effectively oversee and govern AD, Microsoft 365, Exchange, Skype for Business, and Google Workspace environments across multiple clients through a unified interface.

ADManager Plus MSP provides you with powerful productivity and security benefits. This solution enables you to build custom workflow structures for each client based on their requirements to handle ticketing and compliance, orchestrate the entire user life cycle across integrated applications, and efficiently run access certification campaigns. Using ADManager Plus, you can also check the risk score of all your clients, gain insights into identities and their access rights utilizing up to 200 reports, and more.

Licensing model:

The licensing model is based on the total number of domain users and help desk technicians.

Starts at \$995

Supported features

- ✓ **Centralized management**
Centrally administer multiple AD domains, Microsoft 365 tenants, and Exchange servers with complete data segregation.
- ✓ **Access certification campaigns**
Minimize the risk of unauthorized access and ensure compliance with SOX, HIPAA, PCI, FISMA, GLBA, and the GDPR for your clients through periodic access reviews.
- ✓ **Customizable dashboards**
Create tailored dashboards for insight into clients' domains and metrics.
- ✓ **Enterprise-ready integrations**
Enable out-of-the-box integrations with HCM and ITSM solutions, syslog servers, and SIEM.
- ✓ **Built-in reports library**
Generate, customize, and share reports for in-depth visibility into AD, Microsoft 365, and Exchange.
- ✓ **Seamless backup and recovery**
Create full or incremental backups of AD, Azure AD, and Google Workspace to recover without hassle.
- ✓ **Mitigate identity risks**
Evaluate AD and Microsoft 365 risk indicators so you can take proactive remediation measures.
- ✓ **Automated actions**
Implement a policy-driven approach for automated provisioning, deprovisioning, and routine tasks.
- ✓ **Granular access control**
Assign role-based privileges without elevating permissions in AD.
- ✓ **Custom workflows with alerts**
Execute critical changes with review-approval workflow, receive real-time alerts, establish rules and SLAs for timely request handling.
- ✓ **Migration solutions**
Address your clients' migration challenges by securely migrating users, groups, contacts, and GPOs using GUI-based actions.
- ✓ **Mobile-based management**
Manage AD while on-the-go with iOS and Android mobile apps.

System Requirements:

Processor: P4 - 2.1GHz. RAM: 4GB.

Disk space: 5GB.

Supported Windows OS versions: Windows Server 2008 and above, Windows 7 and above

Supported browsers: Internet Explorer 10 and above, Mozilla Firefox, Google Chrome, Microsoft Edge

Contact Us:

Website: www.manageengine.com/active-directory-manager-msp/

Sales: sales@manageengine.com

Support: support@admanagerplus.com

[\\$ Get Quote](#)

[Download](#)